



Bio-Security Module BSM05:

MOVEMENT OF OSTRICHES FROM ONE REGISTERED FARM TO ANOTHER REGISTERED FARM

(Version 2.4: October 2011)

OBJECTIVE

To ensure that there is full traceability of all movements of ostriches between farms and to reduce the risk that sick or infected ostriches are moved from one farm to another. This BSM addresses the major route for the spread of disease such as Avian Influenza between farms.

MOVEMENT PROTOCOL

1. Movement of ostriches by a registered farm to an unregistered farm and *vice versa* is not permitted.
2. Movement of ostriches by a registered farm to another registered farm without strictly following the movement protocol stipulated in BSM05 is not permitted.
3. The dispatching farm must contain appropriate pre-movement holding camps for holding of ostriches prior to dispatch. These holding camps must be provided with appropriate drinking water and feed supply systems as ostriches will need to remain in these holding camps for approximately 2 weeks while the results from blood / PCR tests are being awaited.
4. Ostriches (other than day-old chicks) to be moved, must have been vaccinated against Newcastle Disease and must be fitted with an SAOBC approved identification tag and then be divided into flocks destined for a single receiving farm.
5. A flock must then be allocated to an identified pre-movement holding camp or camps and the camp identification must be entered into the **Flock Movement Passport (Form No BSM05/001)**. No holding camp may hold more than one flock. Once a flock has been allocated to a holding camp(s), no additional ostriches may be added to that holding camp(s), nor may ostriches be removed from the holding camp(s) (except for ostriches have died or become injured) until blood /PCR test results are known and the ostriches to be moved have been moved off the farm. Any inspection or audit of a holding camp that reveals the presence of untagged ostriches or ostriches with tags that do not correspond to those entered on the original flock register will constitute a critical offence.
6. Any mortalities in a flock that has entered a pre-movement holding camp must be reported in the Flock Movement Passport and in the farm's Ostrich Mortality Register. The causes of mortality must be entered into the **Flock Movement Passport** and the Ostrich Mortality Register for those ostriches that died must be kept in the farm records.
7. If there is an intent to send ostriches (other than day-old chicks) to different receiving farms, then the ostriches must be divided into appropriate different flocks, kept in separate pre-movement holding camps, with such division occurring before the **Flock Movement Passports** are completed and prior to sampling for blood/PCR samples.
8. A **Flock Movement Passport** must be prepared for each flock that provides the identification tag number for each ostrich in the pre-movement holding camps housing the flock, the date that the flock was placed in the camps, any veterinary dosages or treatments that were applied to the flock at the time of selection of the flock and the average age of the flock. The **Flock Movement Passport** must also include the registration number and the signature of the owner (or his designated representative) for both the dispatching farm and the intended receiving farm.
9. The **Flock Movement Passport (Form No BSM05/001)** must be provided with a unique **Flock Register Number** which will be obtained telephonically from the SAOBC who will keep a national database of all **Flock Register Numbers**, together with the number and ID of ostriches entered in the **Flock Movement Passport**, the registration numbers of the dispatching and receiving farms, the name of the official who took the blood /PCR samples and the date on which the blood /PCR samples were taken. A unique **Flock Register Number** must be allocated to each flock of ostriches moving between a single dispatching farm and a single receiving farm.
10. Each flock must then be sampled by an approved official in order to take blood /PCR samples for AI testing. At the time that the blood /PCR samples are taken, a copy of the **Flock Movement Passport** completed for that flock must also be handed to the official taking the samples in order to submit to the SAOBC. Note that the sampling of the flock to be moved is additional to the 21 day sampling of all epidemiological groups on the farm, unless done on the same day.
11. The number of ostriches in each flock to be sampled depends on flock size and is determined as follows (based on Ostrich Protocol – will be revised shortly):

• Flock size ≤10	Sample size = 10
• Flock size 11-20	Sample size = 16
• Flock size 21-50	Sample size = 22
• Flock size 51-100	Sample size = 25
• Flock size 101-200	Sample size = 27
• Flock size 201-900	Sample size = 28
• Flock size >900	Sample size = 29
12. The flock will remain in the pre-movement holding camp until such time as the results from the blood / PCR samples have been received and the ostriches can be moved. The official taking the blood / PCR samples from the flock must choose the ostriches to be sampled himself, he must confirm that the ostrich to be sampled is fitted with an approved identification

tag and he must confirm that the specific identification tag number is already included in the **Flock Movement Passport** provided to him by the farm owner and he must confirm that the same number of ostriches entered into the **Flock Movement Passport** were available in the pre-movement holding camps at the time of sampling (less mortalities entered into the **Flock Movement Passport** and Ostrich Mortality Register and for which approved tags can be provided). On completion of sampling, the official must enter the following information into the **Flock Movement Passport**:

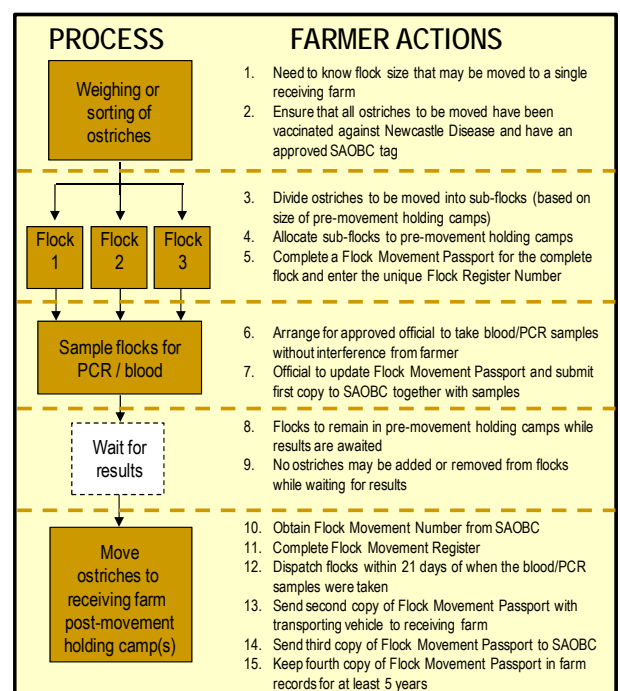
- Date and number of blood / PCR samples taken
 - ID number of each ostrich sampled
 - Confirmation that he chose each sampled ostrich himself, that he personally took the blood / PCR samples, that no ostriches were found with ID numbers that were not already on the flock register and that the total number of ostriches in the **Flock Movement Passport** were in the pre-movement holding camps at the time of sampling.
 - Sign the **Flock Movement Passport**.
 - The official must hand in a fully completed copy of the **Flock Movement Passport** to the SAOBC at the same time as handing in the blood / PCR samples as no samples will be submitted for testing without the completed **Flock Movement Passport**.
13. The blood /PCR test results will be reviewed by the SAOBC and, if the results support the movement of the ostriches will issue the dispatching farm with a unique **Flock Movement Number**, which will be entered into the **Flock Movement Passport**, thereby allowing the intended movement to proceed. The movement must then take place within 21 days of the date when the samples were taken.
14. If any positive results are obtained, then the flock may not be moved and the prescribed disease control procedures will be initiated by the Provincial Veterinary Authorities.
15. Any false declarations by the dispatching farm or receiving farm will lead to prohibition on the movement of the flock to which the false declarations apply. Any false declarations by the official taking blood / PCR samples will result in immediate disciplinary actions being taken against such official.
16. Ostriches (other than day-old chicks) may only be moved from a registered farm to another registered farm when the following conditions have been met:

- The ostriches to be moved are accompanied by a copy of the fully completed **Flock Movement Passport** which must include the issued **Flock Movement Number**. This copy must be retained and kept by the receiving farm for a minimum of 5 years.
- Only the ostriches with identification tags listed on the **Flock Movement Passport** may be moved.
- Where a flock to be moved is too large to be moved as a single lot (e.g. in different vehicles) and needs to be divided into sub-lots, then a copy of the complete **Flock Movement Passport** must accompany each vehicle. If the vehicle moving ostriches is stopped for inspection purposes and it is found to not be accompanied by a valid **Flock Movement Passport** or it is found that one or more ostriches on the vehicle have no tag or have a tag

number not included in the **Flock Movement Passport**, then the full load of ostriches will need to be returned to the dispatching farm and appropriate actions will be taken.

- Ostriches that were originally in a flock being moved may be left behind and must be clearly identified as such in the **Flock Movement Passport**. Ostriches left behind must then remain on the farm for at least 2 weeks after being removed from a flock and may not be added to any other flock from which blood / PCR samples have already been taken.
- The flock to be moved must be moved within 21 days of the date on which the blood/PCR samples were taken, must be moved directly from the dispatching farm to the receiving farm and may not be temporarily stopped or offloaded at any other registered or unregistered farm. They must be offloaded into a post-movement holding camp.
- A copy of the fully completed **Flock Movement Passport** must then be submitted to the SAOBC to replace the preliminary **Flock Movement Passport** originally submitted together with the blood and PCR samples (see Paragraph 12 above). This copy must clearly identify those ostriches not moved in order that the SAOBC records can be kept up to date in terms of keeping record of the location of every tagged ostrich.
- A final copy of the **Flock Movement Passport** must be retained by the dispatching farm and kept in the farm records for a minimum of 5 years.

A figure which illustrates the process that is described in this BSM05 and also clearly highlights the actions that the farm owner must undertake in order to ensure compliance with BSM05 is shown in BSM05A. This BSM05 can only be complied with by farms that are in possession of Form BSM05/001.



NOTE: This BSM must be used in conjunction with Form BSM05/001: Flock Movement Passport